

CASON COURT

BEING A REPLAT OF TRACT "A" OF CASON UNITED METHODIST CHURCH, PLAT BOOK 136, PAGES 35 AND 36 (P.R.P.B.CO.), BEING IN SECTION 17, TOWNSHIP 46 SOUTH, RANGE 43 EAST, CITY OF DELRAY BEACH, PALM BEACH COUNTY, FLORIDA

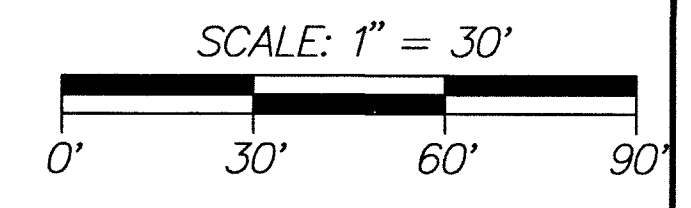
SHEET 2 OF 2

THIS INSTRUMENT WAS PREPARED BY PAUL D. ENGLE, IN THE OFFICE OF ENGLE LAND SURVEYING LLC, 955 N.W. 17TH AVENUE, SUITE K-1, DELRAY BEACH, FLORIDA 33445 (561) 276-4501

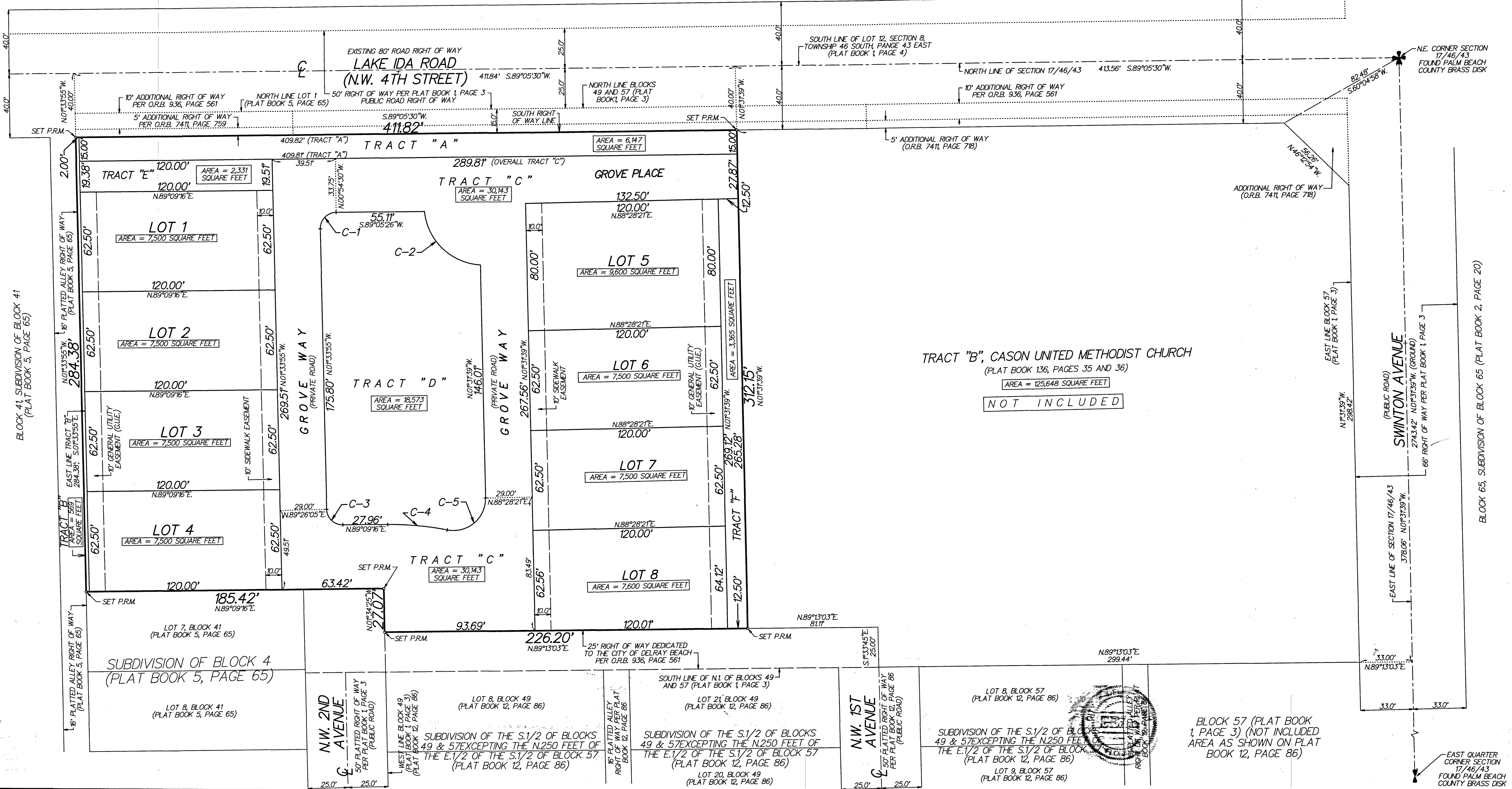
CURVE TABLE				
CURVE NUMBER	CENTRAL ANGLE	RADIUS	ARC LENGTH	CHORD BEARING
C-1	90°39'21"	10.00'	15.82'	N.43°45'45"E.
C-2	81°30'53"	37.00'	52.64'	S.46°19'11"E.
C-3	89°16'49"	10.00'	15.58'	S.46°12'20"E.
C-4	11°51'48"	180.00'	37.27'	S.84°54'50"E.
C-5	102°32'44"	20.00'	35.80'	N.49°44'43"E.

LEGEND:
 C = CENTERLINE
 P.R.M. = PERMANENT REFERENCE MONUMENT (4"x4" CONCRETE MONUMENT STAMPED "PRM LBB447") UNLESS STATED OTHERWISE
 P.R.M. (NAIL) = PERMANENT REFERENCE MARKER (NAIL AND DISK STAMPED "PRM LBB447")
 P.R.P.B.CO. = PUBLIC RECORDS OF PALM BEACH COUNTY
 SECTION 17/46/43 = SECTION 17, TOWNSHIP 46 SOUTH, RANGE 43 EAST
 O.R.B. = OFFICIAL RECORDS BOOK
 L.B. = LICENSED BUSINESS

195



LOT 12, MODEL LAND COMPANY'S SUBDIVISION OF SECTION 8, TOWNSHIP 46 SOUTH, RANGE 43 EAST (PLAT BOOK 1, PAGE 4)



BLOCK 65, SUBDIVISION OF BLOCK 65 (PLAT BOOK 2, PAGE 20)

BLOCK 41, SUBDIVISION OF BLOCK 41 (PLAT BOOK 5, PAGE 65)

SUBDIVISION OF BLOCK 4 (PLAT BOOK 5, PAGE 65)

TRACT "B", CASON UNITED METHODIST CHURCH (PLAT BOOK 136, PAGES 35 AND 36)
NOT INCLUDED

BLOCK 57 (PLAT BOOK 1, PAGE 3) (NOT INCLUDED AREA AS SHOWN ON PLAT BOOK 12, PAGE 86)